

Live Complexity Training - LCT

LCTx2 (Dual Channel) for Nexus

Including Theta Alpha Gamma Synchrony

TAG Sync x2

June 2020 - Rev 3

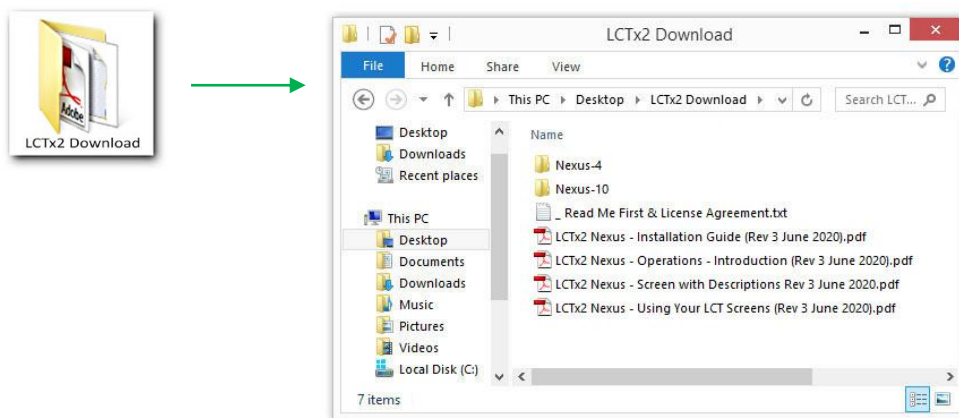
Installation Guide



Your dual channel LCTx2 software should be downloaded and saved to your **desktop**. It will be in the form of a “zipped” file with the extension “.zip” appearing at the end of the file name. It should appear similar to the icon on the Left. The downloaded folder includes your name as part of its file name, e.g., “Name_LCTx2_NX_2020A.zip”.

You will need the unzip password sent to you by email in order to extract the files. Once the zipped file is downloaded onto your desktop, right click in any blank area of your desktop and chose “New” and then chose “Folder”. A new unnamed folder appears. Name it “**LCTx2 Download**”. Open (by double left clicking) your zipped folder, select all the contents. Drag them to the new folder. Before they are copied you will need to enter the password provided with your download.

Now your desktop contains a folder called “LCTx2 Download”. Double click on it to verify that you are seeing the contents of the download file as seen below.

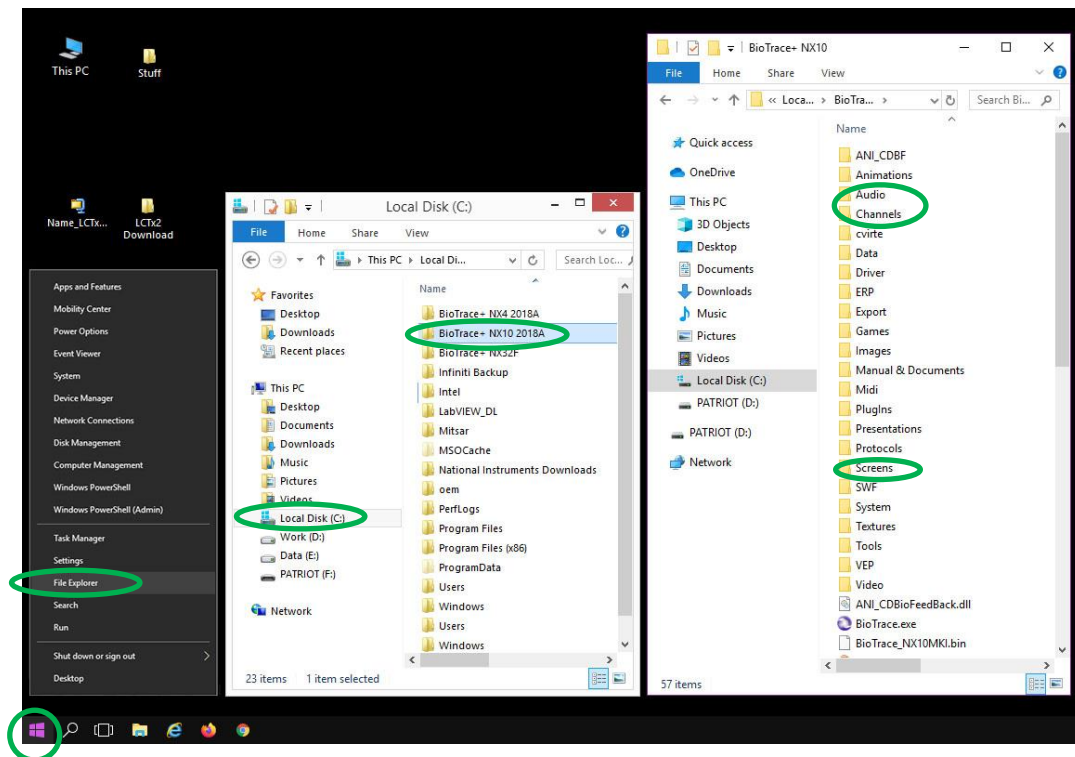


Most computers have one or two hard drives for program and data storage. These are usually called "C Drive" and "D Drive". Then there might be one or two drives to read and write CDs and DVDs, called "D Drive" or "E Drive", etc. All your Nexus program files and folders will probably be on your "C Drive" in a folder called "BioTrace+ NX10 2018A" for Nexus 10 or "BioTrace+ NX4 2018A" for Nexus 4. You will need to take your new unzipped LCT folders and files and copy them into the correct Nexus folders on your "C Drive". This will be described below.

Installation requires you to explore the contents of your unzipped folder using "Windows File Explorer", and then drag the contents into your Nexus folders. If this process is unfamiliar to you, you can search the internet for "Windows File Explorer" and then for "Windows drag and drop", or you can contact LCT Technical support by phone (360) 984-6622 or email mind@growing.com, or ask someone nearby who has experience with "exploring folders and dragging and dropping" in Windows.

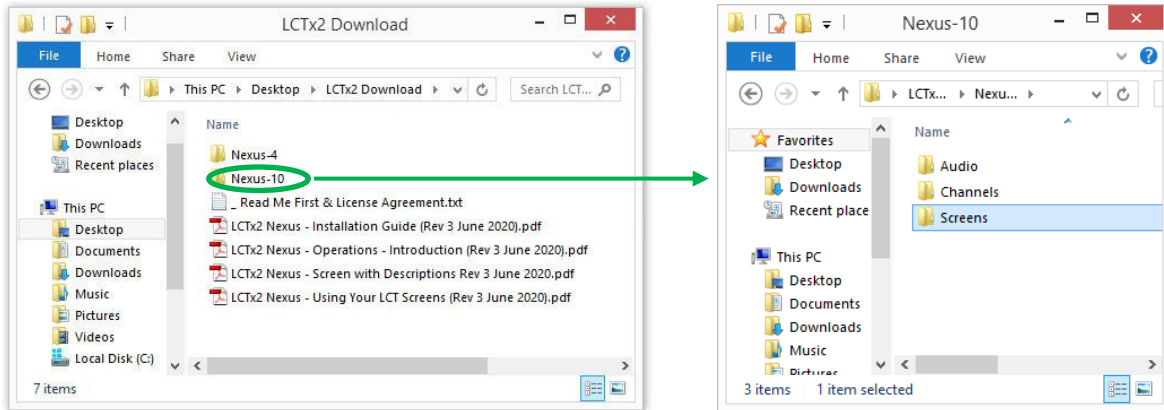
1 – Find and open the folder that has all your BioTrace files. These are where you will transfer your LCTx2 folders and files.

To open the BioTrace+ folder that contains the destinations for your new LCTx2 screens in Windows 10 do the following: 1) right click on the windows icon in the bottom left of the screen. You will see the context sensitive menu that appears above it. Left click on "File Explorer". That will show you the contents of your "Local Disk (C:)" as shown below. The select and double click on "BioTrace+ NX10 or NX4 + version" to open the BioTrace+ resource folder itself. You will be transferring LCT files into the following BioTrace+ folders: 1) Audio 2) Channels and 3) Screens.



You can leave the BioTrace+ System folder (on the right) open where it is; You can close the Local Disk (C:) folder. Now we are going to open our LCTx2 Download folder and select the contents we want to transfer to the BioTrace+ system folder.

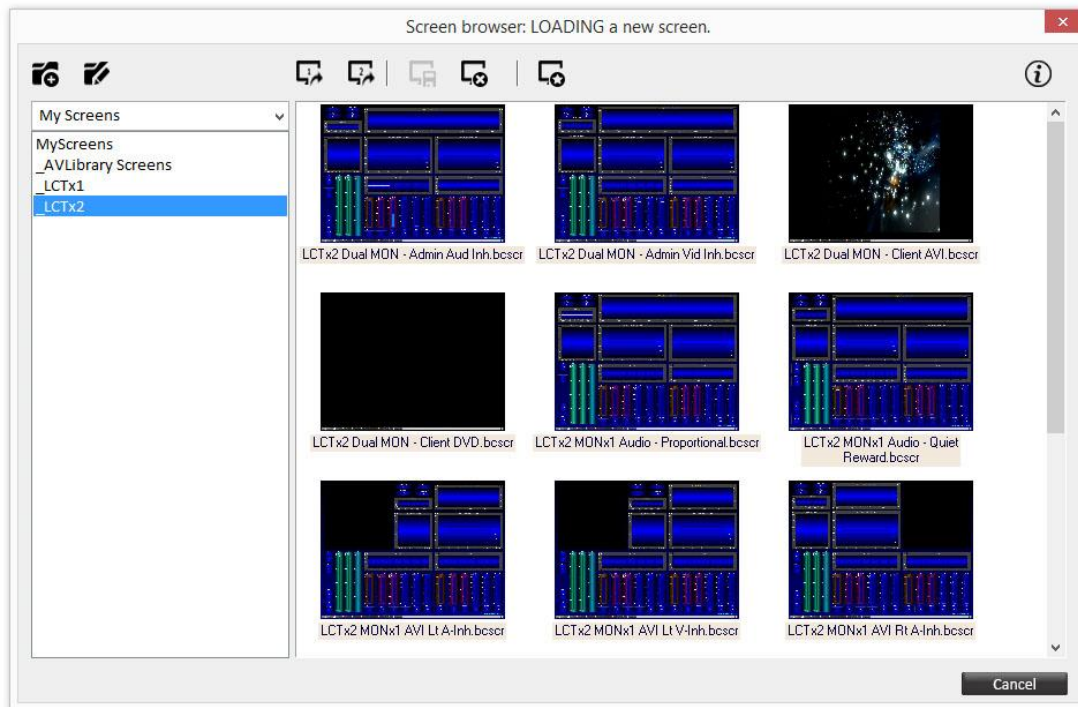
In the LCTx2 Download folder double click on Nexus-10 to see its content on the right below.



See the three downloaded folders - Audio, Channels and Screens. You will open each of those folders individually. You will open each of the similarly named folders in the BioTrace+ System folder that was previously opened on the right side of your screen. Drag the contents of each of the 3 download folders into the similarly named target folder.

2 – Use the BioTrace+ Screen Browser to confirm that your screens are ready to use

Start BioTrace, press the "L" key to load screens, and note that your "select a screen category" list on the left (below) now contains a folder called "_LCTx2". Select your new screen category to see the screens now available to you for training.



3 – Learn about your different Live Complexity Screens.

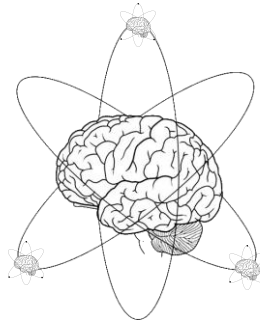
Your download folder contains a pdf titled “LCTx2 Nexus - Using Your LCT Screens”. This document will help you decide which screen to use during a session. There is also a pdf titled “LCTx2 Nexus - Screen with Descriptions” that briefly describes the different instruments on each screen. Finally consult your pdf titled “LCTx2 Nexus - Operations – Introduction”.

If you have any questions about the installation process please contact me.

Best wishes,

Douglas Dailey

Douglas Dailey
Vancouver WA USA
(360) 984-6622
mind@growing.com



The brain/atom logo is a **service mark** of “A Matter of Mind” and D Dailey since 2008.